



PTTEP

MEMBER OF

**Dow Jones
Sustainability Indices**

In Collaboration with RobecoSAM

5-Year Investment Plan 2022-2026

1 December 2021

Forward-looking Information

The information, statements, forecasts and projections contained herein reflect the Company's current views with respect to future events and financial performance. These views are based on assumptions subject to various risks. No assurance is given that these future events will occur, or that the Company's assumptions are correct. Actual results may differ materially from those projected.

Petroleum Reserves Information

In this presentation, the Company discloses petroleum reserves that are not included in the Securities Exchange and Commission of Thailand (SEC) Annual Registration Statement Form 56-1 under "Supplemental Information on Petroleum Exploration and Production Activities". The reserves data contained in this presentation reflects the Company's best estimates of its reserves. While the Company periodically obtains an independent audit of a portion of its proved reserves, no independent qualified reserves evaluator or auditor was involved in the preparation of reserves data disclosed in this presentation. Unless stated otherwise, reserves are stated at the Company's gross basis.

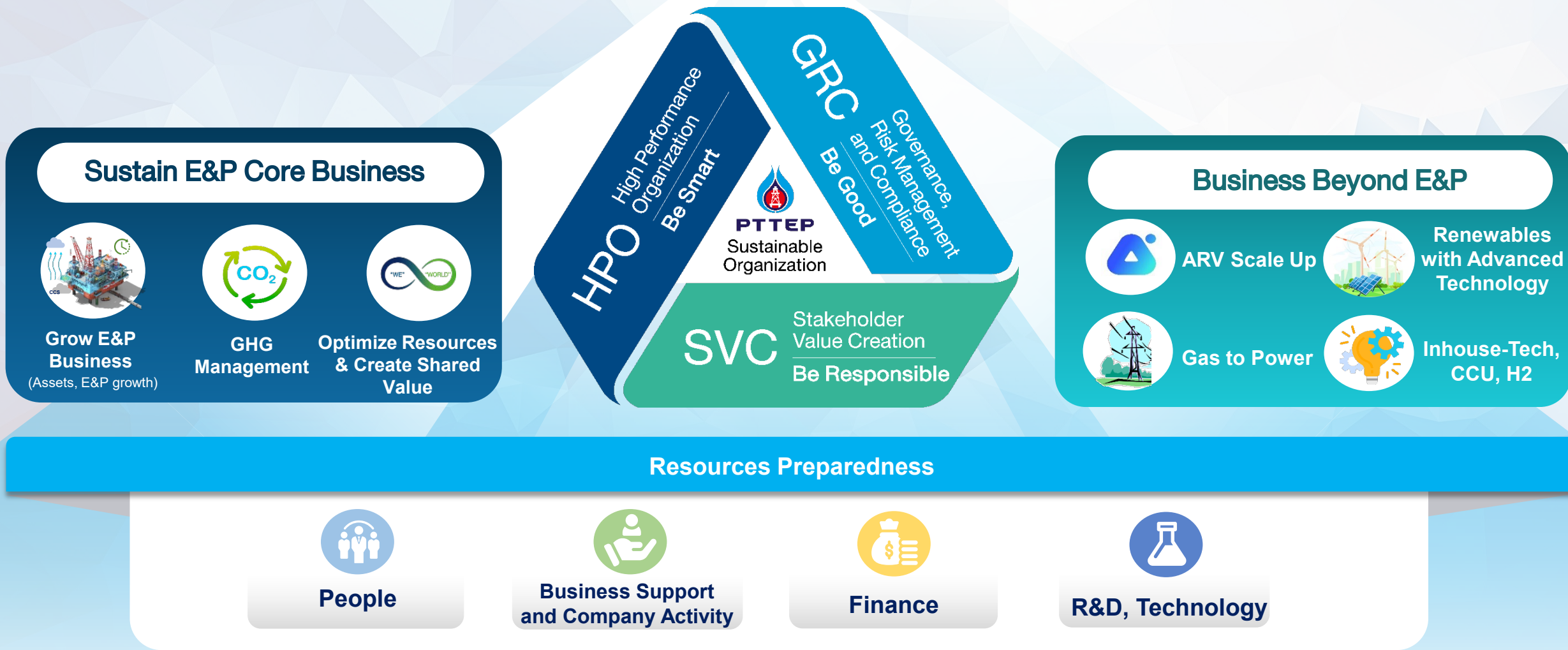
This presentation may contain the terms "proved reserves" and "probable reserves". Unless stated otherwise, the Company adopts similar description as defined by the Society of Petroleum Engineers.

Proved Reserves - Proved reserves are defined as those quantities of petroleum which, by analysis of geological and engineering data, can be estimated with reasonable certainty to be commercially recoverable, from a given date forward, from known reservoirs and under current economic conditions, operating methods, and government regulations.

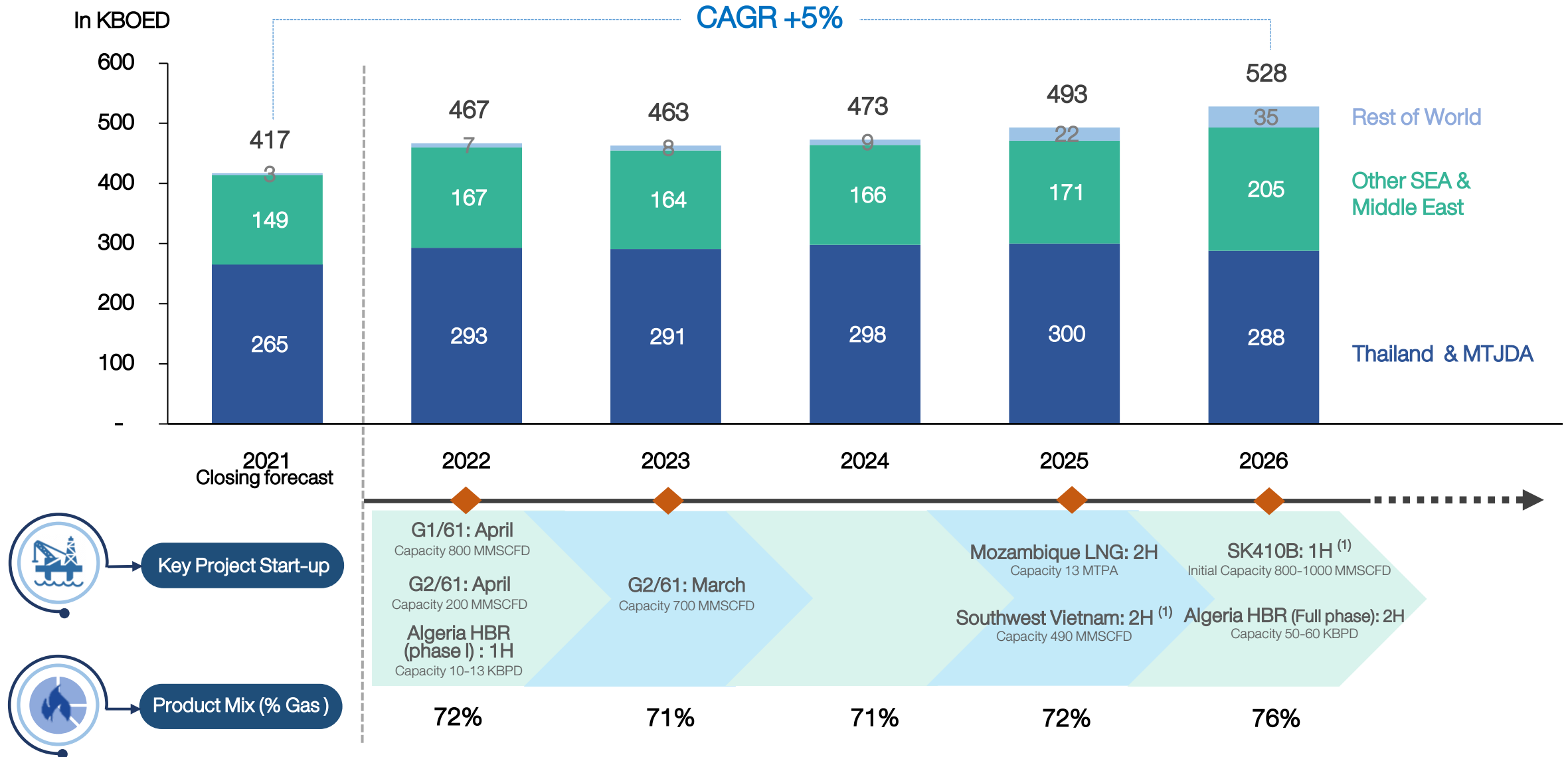
Probable Reserves - Probable reserves are defined as those unproved reserves which analysis of geological and engineering data suggests are more likely than not to be recoverable.

Five-Year Investment Strategy

Investing for a Sustainable Growth Towards Energy Transition



Five –Year Plan : Sales Volume



Note: ⁽¹⁾Subject to regulatory approval and FID timing

Five –Year Plan : Investment

BUDGET

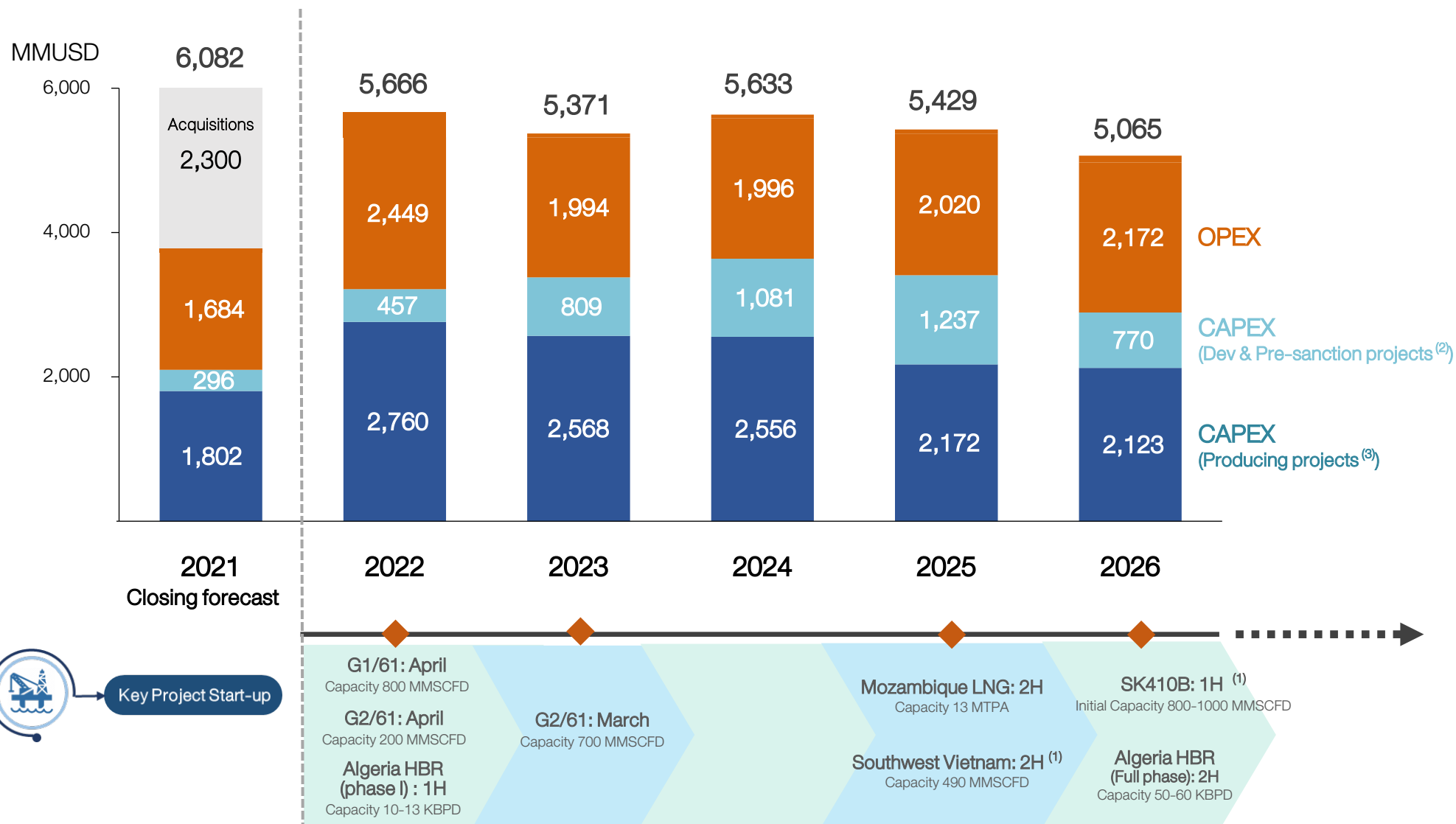
27.2 bnUS\$

CAPEX

16.5 bnUS\$

OPEX

10.7 bnUS\$



Note: ⁽¹⁾ Subject to regulatory approval and FID timing

⁽²⁾ Development & Pre-sanction projects include Mozambique LNG , Algeria HBR, SK410B and Southwest Vietnam

⁽³⁾ Including exploration and appraisal in all projects and head office CAPEX, and new businesses

Investment Budgets for Business Beyond E&P



AI AND
ROBOTICS
VENTURES

ROVULA

End-to-end AI-augmented **Subsea**
Inspection Repair and Maintenance (IRM)



One-stop Service for **Smart Farming**
and **Smart Forestry** Solutions



Cloud-based Asset **Inspection** and Mgmt.
Platform via Drones & AI/ML services



Lifetime **digital health** ecosystem for
illness and good-health



Power



Gas to Power/ LNG to Power

- PTTEP's gas / LNG value chain and capabilities



Offshore / Onshore Wind

- Clean energy
- Early capture of low-speed wind tech
- PTTEP's offshore capabilities



Solar

- Clean energy
- Low risk, proven technology
- Capability for future green H2

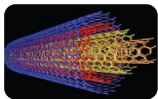


New Business

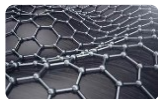
In-house Technology



Pipeline Decommissioning Solution

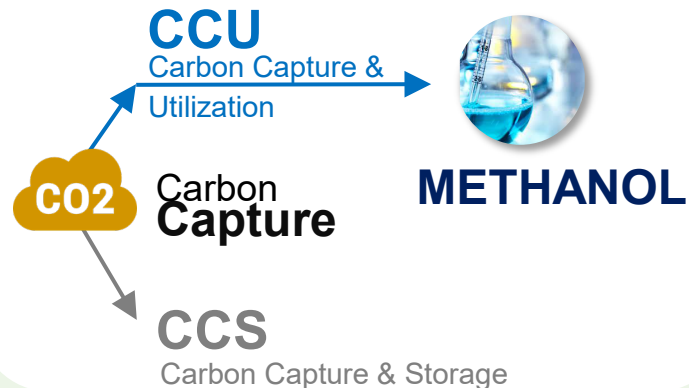


Carbon Nanotube from Flare Gas

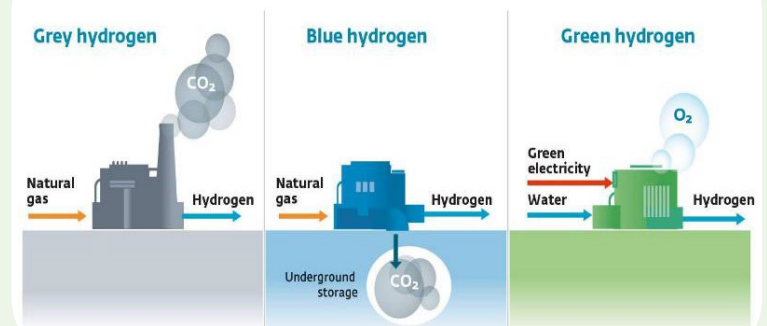


Graphene from Crude Oil Sludge

Carbon Capture & Utilization



Hydrogen



Note: ARV Budget was already included in announced budgets.

Power and New Business 5-year budgets total of approx. 4.4 billion\$ (CAPEX and OPEX), not yet included in announced 5-year budget of 27.2 Billion USD

Budget

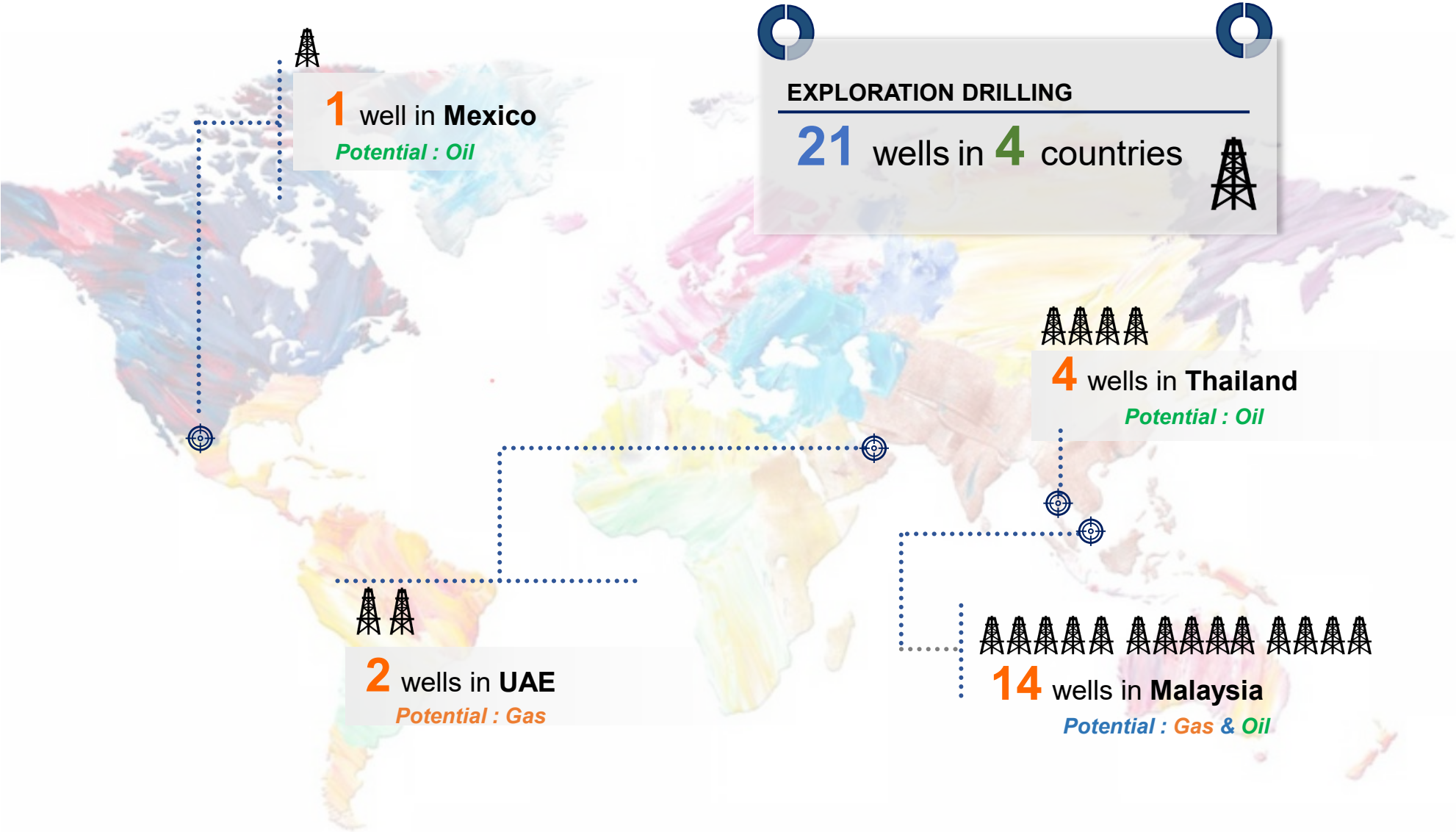
288 mmUS\$

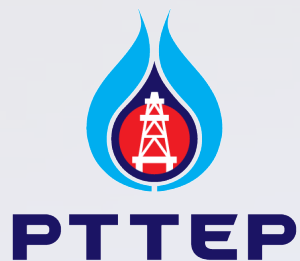
CAPEX (Drilling)

262 mmUS\$

OPEX (G&G seismic)

26 mmUS\$





Thank you and Q&A

You can reach the Investor Relations team for more information and inquiry through the following channels



IR@pttep.com



<http://www.pttep.com>

